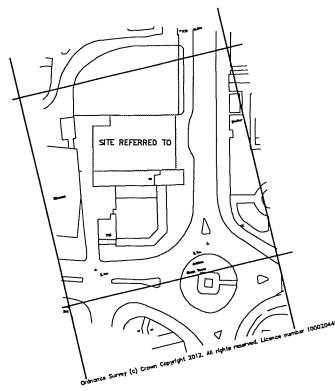
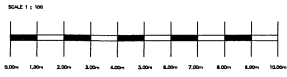


Proposed application for SEV Licence
 S-y Pier, Grand Parade
 Skegness, Lincolnshire.
 for Mr. T. Bola



Location plan scale 1/1250

CCTV closed-circuit television

Final layout to be agreed on site with Local Authority.

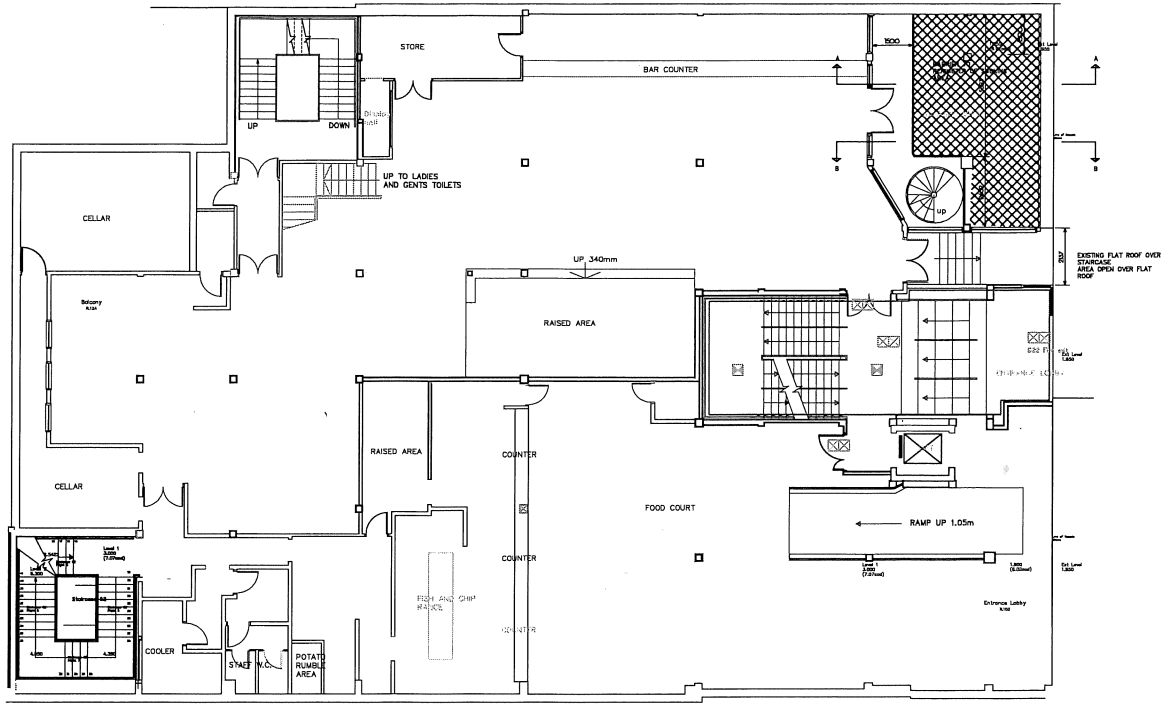
EMERGENCY LIGHTING SYSTEMS

- Emergency light - self contained
- Exit sign - Bi-lateral Mounted

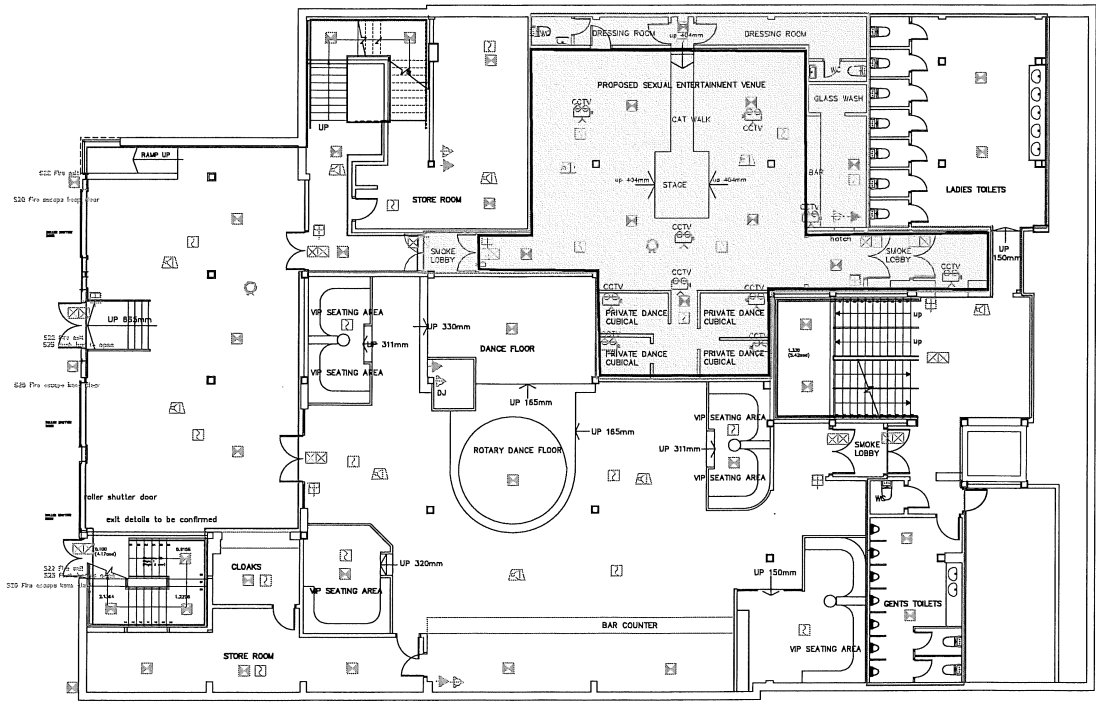
Note: symbols indicates areas to be covered by emergency lighting not number of units.
 All emergency lighting to be in accordance with B.S. 5266
 A copy of test certificate, design and installation certificates from the electrical contractor to be submitted to Building Control

FIRE SAFETY:

- S20 Fire escape hand clear
- S22 Fire wall
- S23 Fire door to room
- S25 Divisive door (closed)
- Fire extinguisher water type 9 litres
- Fire extinguisher Carbon Dioxide 2kg
- Fire extinguisher Dry powder type
- Fire extinguisher foam type 6 litres
- Fire Blanket
- Smoke detector
- Fire alarm audible warning device/sounder
- Fire alarm call point
- Fire alarm visual warning device



PLAN AT LEVEL 1 scale 1/100



Le Seduction
 Lower Ground Floor
 Grand Parade Complex
 Grand Parade
 Skegness, PE25 2UN
 Licensed area edged and shaded red
 Public areas outlined in blue.

PLAN AT LEVEL 0 scale 1/100